

# RA Series

## Right Angle Channels



**Application:** This cost effective right angle strip is ideal for use in all residential, commercial, and institutional areas where clearance and spacing is a problem and general lighting is desired.

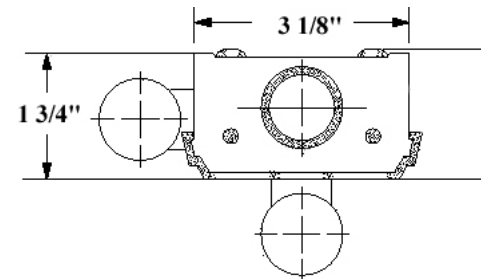
**Construction:** This unit is designed from heavy gauge die formed steel and is finished in baked white enamel or polyester powder coating for maximum durability and reflectivity. Snap on sockets, end plates, and ballast cover allow for tool free assembly.

**Electrical:** All units are furnished with UL Listed Class P thermally protected ballast. Other voltages are available upon request. Fixtures meet requirements for UL Luminaire Standard # 1598. All units comply with National Energy Standards.

**Mounting:** Unit is equipped with knockouts and holes for pendant or surface mounting. This fixture can be mounted individually or in continuous run. 7/8" knockout is provided in end plate for conduit connector.

Fixture Length				
T12	T8	T5	T5HO	Length
F14T12	---	---	---	15"
F15T12	---	---	---	18"
F20T12	F17T8	F14T5	F24T5HO	24"
F30T12	F25T8	F21T5	F39T5HO	36"
F40T12	F32T8	F28T5	F54T5HO	48"

**For Tandem Units:**  
Multiply lamp length above by lamp quantity



Maximum Weight = 9 lbs. / 48"

### Ordering Information

Specifications Subject To Change Without Notice

Model	# Lamps	Lamp Type	Ballast	Voltage	Options	Cord
<b>RA-</b>	<b>2</b>	<b>32</b>	<b>E</b>			
RA	2 = Two  Tandem 22 = Double	<b>T8 Lamps</b> 17 = F17T8 25 = F25T8 32 = F32T8 40T8 = F40T8  <b>T12 Lamps</b> 14 = F14T12 15 = F15T12 20 = F20T12 30 = F30T12 40 = F40T12	<b>T5 Lamps</b> 14T5 = F14T5 21T5 = F21T5 28T5 = F28T5  <b>T5 High Output</b> 24T5HO = F24T5HO 39T5HO = F39T5HO 54T5HO = F54T5HO	M = Magnetic E = Electronic .88 BF E-LW = Electronic .77BF E-O = Electronic 1.18	Blank = 120V 277 = 277 V MV = Multi Volt	O = Grounded Outlet TOG = Toggle Switch ROC = Rocker Switch PULL = Pull Switch  CP-XE=Exit End CP-XS=Exit Side CP-XB=Exit Base Specify Cord Length

K-B Lighting Mfg. Co., Inc. 2101 Byberry Road, Philadelphia, PA 19116  
 (215) 673-6400 phone (215) 673-6431 fax [sales@kblighting.com](mailto:sales@kblighting.com) email