



# SPT Series

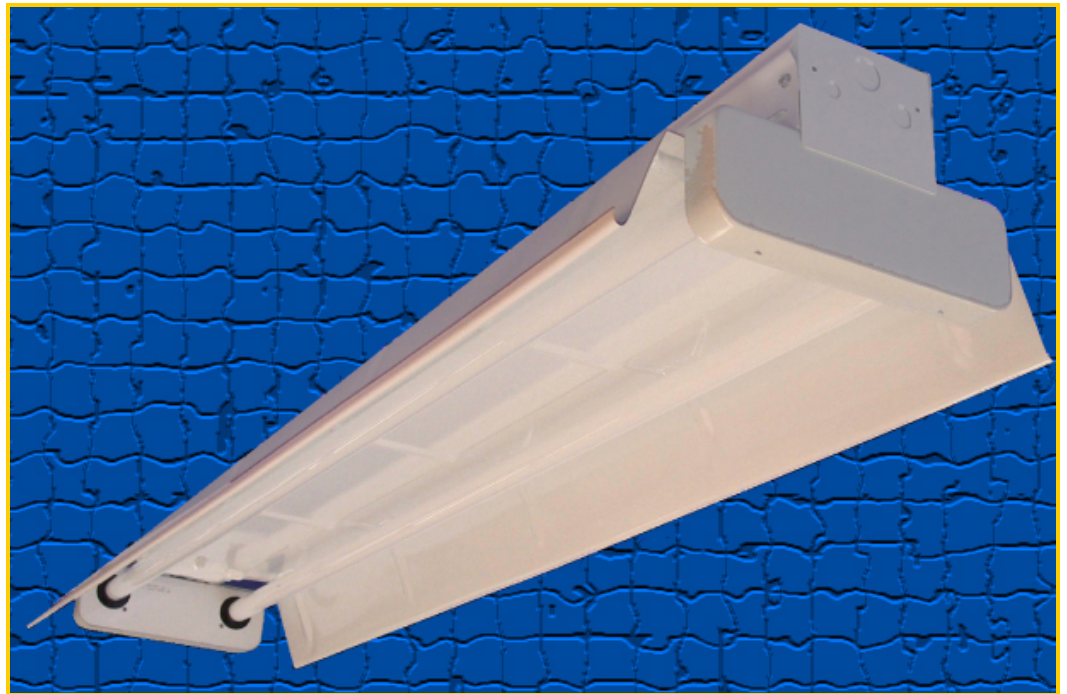
## Turrett Industrial Units

**Application:** This quality turret unit with reflector is designed for use in most industrial areas. Wide tube spacing and reflector provide maximum down light and increases light levels in workshops, warehouses, and production areas.

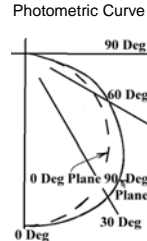
**Construction:** The turret industrial unit is designed from heavy gauge die formed steel and finished in a baked white enamel finish or polyester powder coating for superior reflectivity and durability. Turrett socket bar provides additional tube support and greater light distribution. Hand turning cam locks allow tool free reflector removal and easy maintenance.

**Electrical:** All units are furnished with UL Listed Class P thermally protected ballast. Other voltages are available upon request. Fixtures meet requirements for UL Luminaire Standard # 1598. All units comply with National Energy Standards.

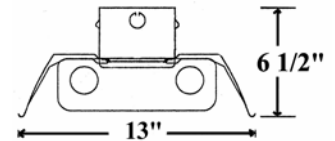
**Mounting:** Fixtures are designed with holes and knockouts making it suitable for surface mounting, chain hanging, or pendant mounting for individual or continuous run. Knockout in end plates are for use with conduit connectors.



Coefficients Utilization Zonal Cavity Method												
RF	20											
RC	80%				70%				50%			
RW	70	50	30	10	70	50	30	10	50	30	10	
0	101	101	101	101	98	98	98	98	94	94	94	
1	92	89	85	82	90	87	84	81	80	78	76	
2	84	78	72	67	82	76	72	66	73	69	65	
3	77	68	62	56	75	67	61	56	65	59	55	
4	70	61	53	48	69	59	53	47	57	51	47	
5	64	53	46	40	62	53	45	40	50	44	39	
6	59	47	40	34	57	47	39	34	45	39	34	
7	54	42	35	30	53	42	35	30	40	34	29	
8	50	38	31	25	48	37	30	25	36	30	25	
9	46	34	27	22	44	33	27	22	32	26	22	
10	42	31	24	19	41	30	24	19	29	23	19	



Fixture Length				
T12	T12HO	T8	T8HO	Length
F40T12	F48T12HO	F32T8	---	48"
---	---	F40T8	---	60"
F72T12	F72T12HO	---	---	72"
F96T12	F96T12HO	F96T8	F96T8HO	96"



**For Tandem Units:**  
Multiply lamp length above by lamp quantity

Maximum Weight = 19 lbs. / 48" 43 lbs. / 96"

### Ordering Information

Specifications Subject To Change Without Notice

Model	# Lamps	Lamp Type	Ballast	Voltage	Options	Cord
<b>SPT-</b>	<b>2</b>	<b>32</b>	<b>E</b>			
<b>SPT</b>	2 = Two 3 = Three 4 = Four  One Row 21 = Two Tube 31 = Three Tube 41 = Four Tube  Two Row 22 = Double Tube	<b>T8 Lamps</b> 32 = F32T8 40T8 = F40T8 96T8 = F96T8 96T8HO = F96T8HO  <b>T12 Lamps</b> 40 = F40T12  <b>T12 Single Pin</b> 48 = F48T12 72 = F72T12 96 = F96T12  <b>T12 High Output</b> 48HO = F48T12HO 72HO = F72T12HO 96HO = F96T12HO	<b>M</b> = Magnetic <b>E</b> = Electronic .88 BF <b>E-LW</b> = Electronic .77 BF <b>E-O</b> = Electronic 1.18 BF	<b>Blank</b> = 120V <b>277</b> = 277 V <b>MV</b> = Multi Volt	<b>O</b> = Grounded Outlet <b>TOG</b> = Toggle Switch <b>ROC</b> = Rocker Switch <b>PULL</b> = Pull Switch <b>WG</b> = Wire Ground <b>EMB</b> = Emergency Ballast <b>REF</b> = Specular Reflector	<b>CP-XE</b> =Exit End <b>CP-XS</b> =Exit Side <b>CP-XB</b> =Exit Base Specify Cord Length

K-B Lighting Mfg. Co., Inc. 2101 Byberry Road, Philadelphia, PA 19116  
 (215) 673-6400 phone (215) 673-6431 fax [sales@kblighting.com](mailto:sales@kblighting.com) email