



VT Series

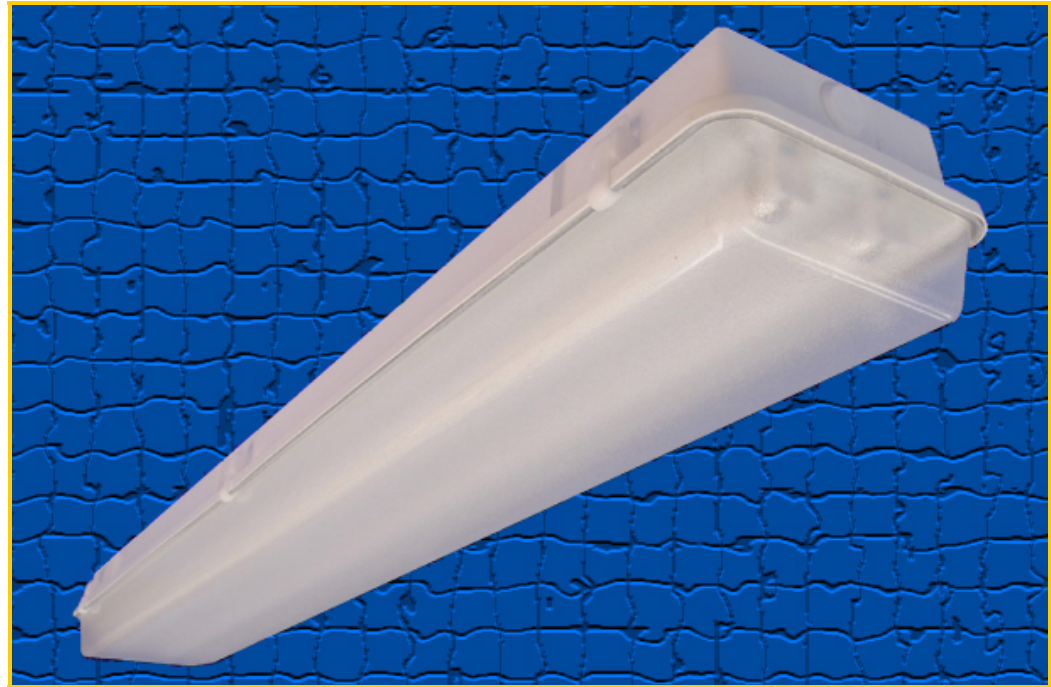
Vapor Tite Unit

Application: This fully weatherproof unit is designed for use in areas of wet location. Designed to withstand direct contact with rain this unit is corrosion resistant and waterproof. This unit is ideal in areas such as car washes, store fronts, parking garages, kitchens, and chemical plants. Vapor Tite unit is capable of being hosed down for easy cleaning.

Constriction: Exterior housing is designed for single piece injection molded fiberglass/plastic combination blend. Neoprene gasket and pressure locks ensure waterproof seal. Interior unit has heavy gauge steel die formed housing with baked white enamel finish for maximum reflectivity and durability.

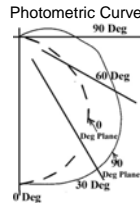
Electrical: All units are furnished with UL Listed Class P thermally protected ballast. Other voltages are available upon request. Fixtures meet requirements for UL Luminaire Standard # 1598. All units comply with National Energy Standards.

Mounting: Vapor Tite Unit available with an stainless steel external hanging bracket. VT Series is watertight and must be drilled and sealed for each surface mounting or chain hanging application.



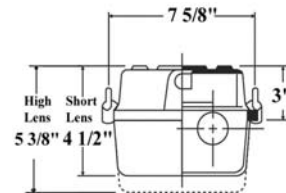
Coefficients Utilization Zonal Cavity Method

RF RC	20											
	80%				70%				50%			
RW	70	50	30	10	70	50	30	10	50	30	10	10
0	83	83	83	83	81	81	81	81	76	76	76	
1	75	71	67	64	72	68	65	62	64	62	59	
2	67	61	56	51	65	59	54	50	55	51	48	
3	61	53	47	42	59	52	46	42	49	44	40	
4	56	47	41	36	54	46	40	35	43	38	34	
5	51	41	35	30	49	40	34	29	38	32	28	
6	47	37	30	25	45	36	30	25	34	28	24	
7	43	33	27	22	41	32	26	22	30	25	21	
8	40	30	23	19	38	29	23	19	27	22	18	
9	36	26	20	16	35	26	20	16	24	19	16	
10	34	24	18	14	33	23	18	14	22	17	14	



Fixture Length

T12	T12HO	T8	T8HO	T5	T5HO	Length
F20T12	---	F17T8	---	F14T5	F24T5HO	26"
F40T12	F48T12HO	F32T8	---	F28T5	F54T5HO	50"
F96T12	F96T12HO	F96T8	F96T8HO	---	---	98"



Maximum Weight = 15 lbs. / 48" 32 lbs. / 96"

Ordering Information

Specifications Subject To Change Without Notice

Model	# Lamps	Lamp Type		Ballast	Voltage	Options	Mounting
VT-	2	32		E			
VT = 50" VTS = 98" VTH = 98"	1 = One 2 = Two 3 = Three	<u>T8 lamps</u> 17 = F17T8 32 = F32T8 96T8 = F96T8 96T8HO = F96T8HO <u>T12 lamps</u> 20 = F20T12 40 = F40T12 <u>T12 Single Pins</u> 48 = F48T12 96 = F96T12	<u>T12 High Output</u> 48HO = F48T12HO 96HO = F96T12HO <u>T5 Lamps</u> 14T5 = F14T5 28T5 = F28T5 <u>T5 lamps</u> 24T5HO = F24T5HO 54T5HO = F54T5HO	M = Magnetic E = Electronic .88BF E-LW = Electronic .77BF E-O = Electronic 1.18BF	Blank = 120V 277 = 277 V MV= Multi Volt	EMB = Emergency Ballast	HB = Hanging Bracket

K-B Lighting Mfg. Co., Inc. 2101 Byberry Road, Philadelphia, PA 19116
 (215) 673-6400 phone (215) 673-6431 fax sales@kblighting.com email