

CL Series



Open Circline Fixtures

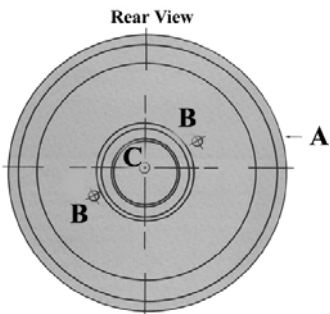


Application: This economical surface mounted Circline unit is available in both white and chrome finish. This unit is for use in commercial and residential areas such as restrooms, closets, hallways, storage areas or any small room area where general lighting is desired.

Construction: This unit is designed from heavy gauge die formed steel and is finished in baked white enamel or highly polished chrome for maximum durability and reflectivity. Pressurized bulb clips ensure centering and bulb support.

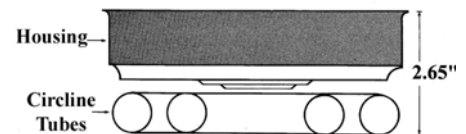
Electrical: All units are furnished with UL Listed Class P thermally protected ballast. Other voltages are available upon request. Fixtures meet requirements for UL Luminaire Standard # 1598. All units comply with National Energy Standards.

Mounting: Units are supplied with crossbar, stem, nut and cap for easy mounting to standard junction box. Fixture is also equipped with knockouts for junction box or direct surface mounting.



Fixture Diameter

Lamp	A Dia.	B	C
1CL-22	8 1/2"	3/16 KO	7/16 KO
1CL-32	11 5/16"	3/16 KO	7/16 KO
2CL-54	11 5/16"	3/16 KO	7/16 KO

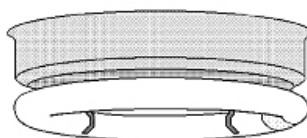


Maximum Weight = 6 lbs.

Ordering Information

Specifications Subject To Change Without Notice

Model	Lamp Type	Ballast	Voltage	Color
1CL	32			WH
1CL = One Lamp 2CL = Two Lamp	22 = FC8T9 32 = FC12T9 54 = FC8T9 & FC12T9	Blank = Magnetic E = Electronic .88 BF E-LW = Electronic .77 BF E-O = Electronic 1.18 BF	Blank = 120V 277 = 277 V MV = Multi Volt	WH = White CH = Chrome



K-B Lighting Mfg. Co., Inc. 2101 Byberry Road, Philadelphia, PA 19116
 (215) 673-6400 phone (215) 673-6431 fax sales@kblighting.com email